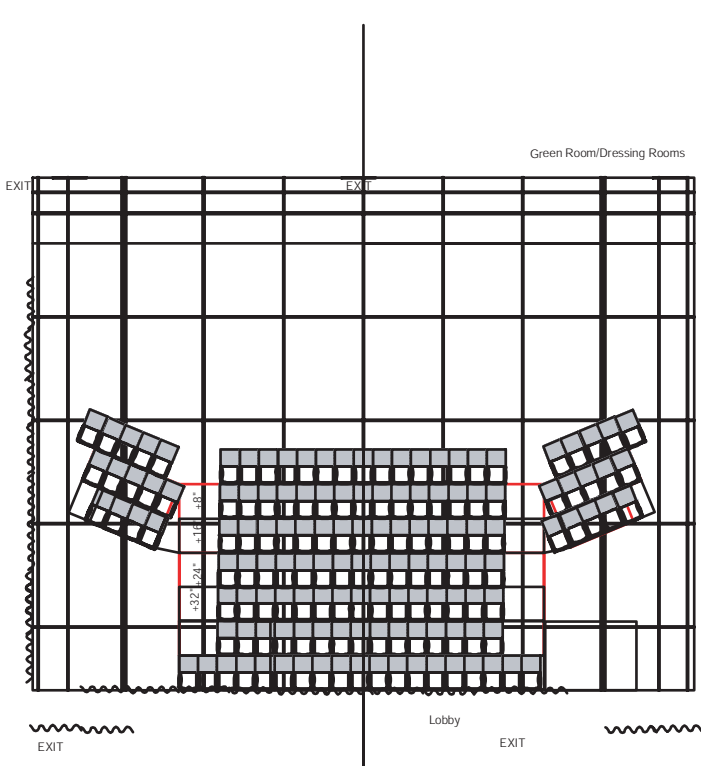
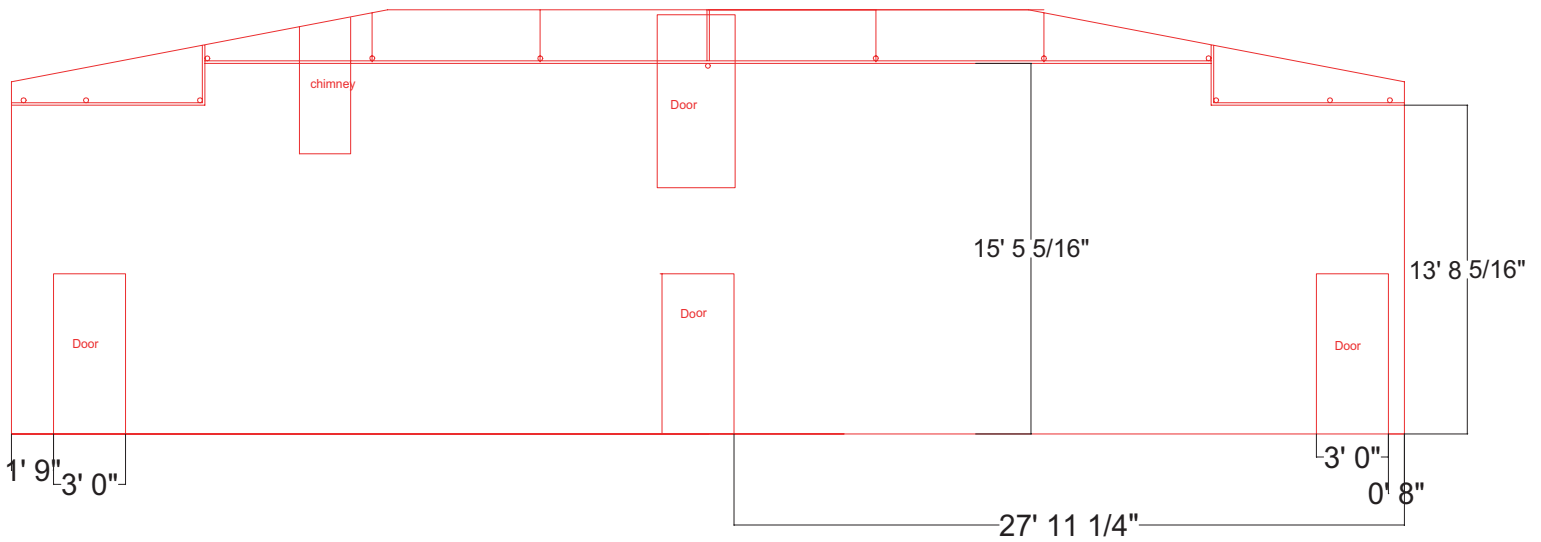


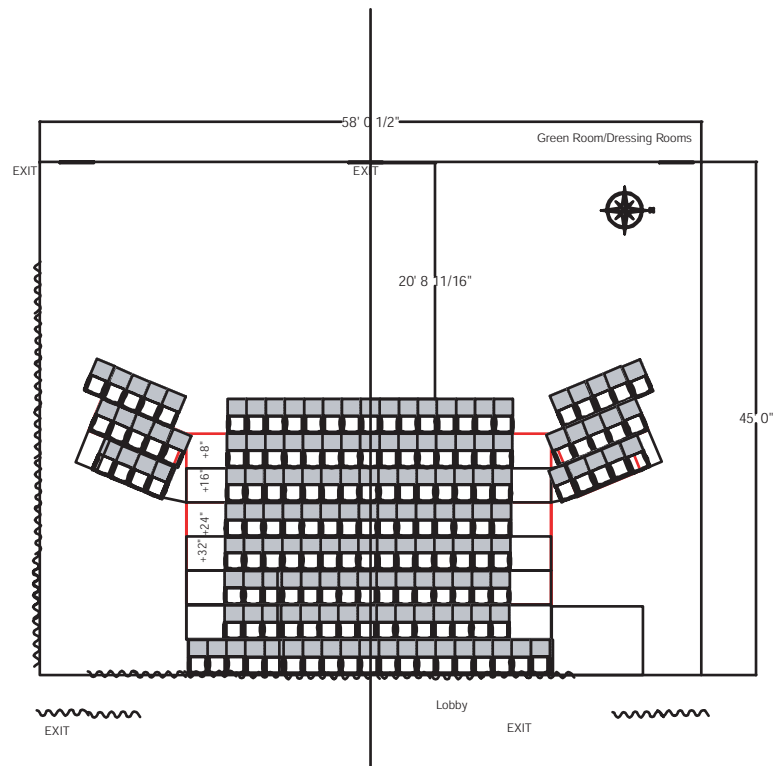
Firehal Theatre Ground Map and Features

The Firehall Theatre is a black box theatre, approximately 45' x 58'. Its versatile space is perfect for almost any function. Features include:

- Seating for 140
- Risers, chairs and cafe tables available
- 3 backstage entrances - one at centre and one on either side
- House plot: front wash, two colour top light wash, with a variety of side lights and specials
- House lights are controlled through the lighting console. A 220v dryer outlet is available upstage center for touring dimmers.
- Sound consists of 2 speakers suspended over the audience and two over the stage. Available playback consists of a computer running SFX through 8 channels and a CD player.
- Street level load in
- Stage floor: masonite on two layers of plywood, on top of dense foam
- Dressing room with washroom and shower



Firehall Theatre with standard seating setup and lighting grid



Firehall Theatre with standard seating setup and select dimensions